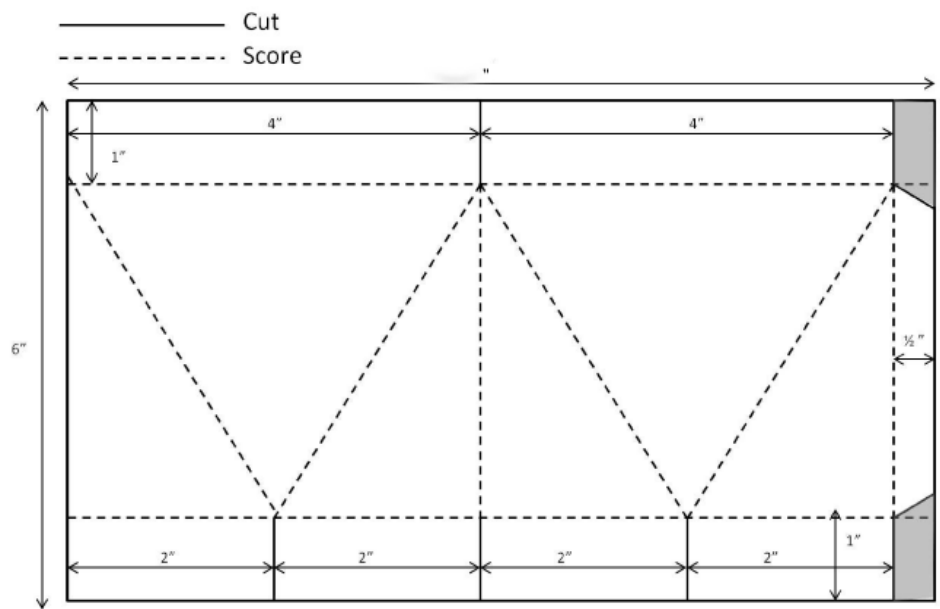


Self Closing Box Instructions



1. Starting with a piece of card stock 8.5" x 6" score on the short side 1" either side (1" and 5")
2. Score on the long side at 4" and 8"
3. The $\frac{1}{2}$ " you have created at the far right of the card will become a tab by cutting out two rectangles either end and creating an angled end to finish the tab (see template)
4. Then within the 1" border that you have created at the base of the card score at every 2" (2", 4" 6" and 8") **just to meet** the horizontal 1" score line you have made.
5. Once you have created the side tab, the top border will have **one score line only** at 4"
6. On the top border cut into the score line at 4" **just to meet** the horizontal 1" score line you have made.
7. Use border punch or framelits to cut a design to decorate top of box
8. On the bottom border cut into and notch out the three score lines you have created **just to meet** the horizontal 1" score line you have made
9. Take an embossing tool and a ruler and create score lines diagonally as shown in the template.
10. Fold and burnish all score lines
11. It is best to decorate box whilst flat and before full assembly
12. Take two pieces of pattern paper $3 \frac{3}{4}$ " x $3 \frac{3}{4}$ " Pinch fold at the half way mark and then diagonally cut from one corner to the pinch mark you have created. Do again on the opposite side so you should now have two small triangles and one large triangle. Repeat on the second piece of paper.
13. Glue pattern paper to box.
14. Adhere sticky strip to side tab and fold flat to stick
15. Glue base tabs in place
16. To finish decorate with ribbon